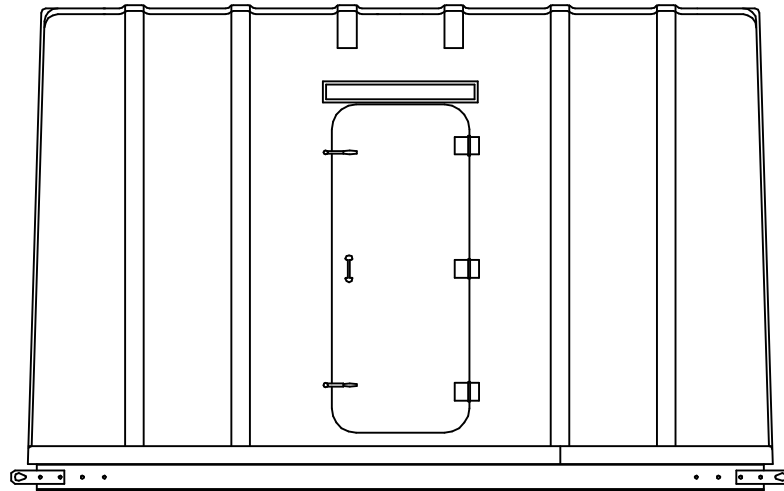
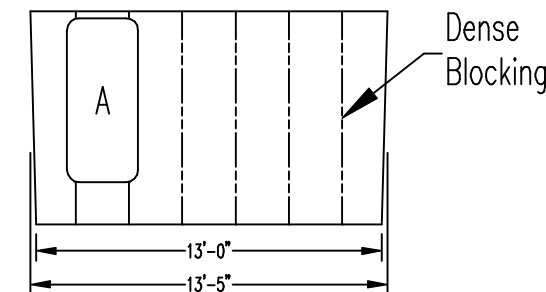
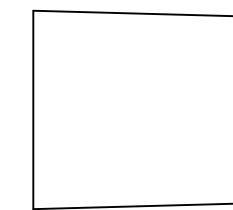
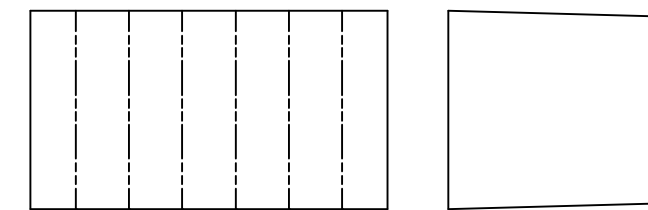
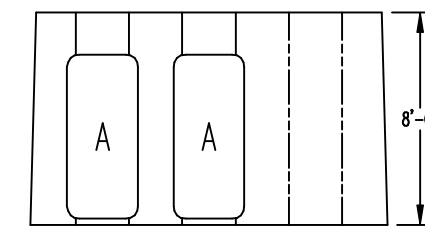
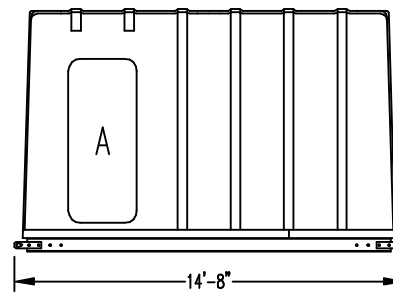
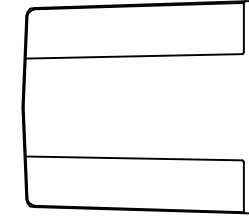
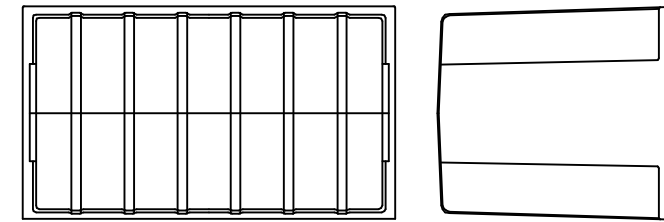
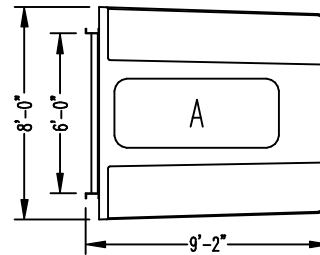
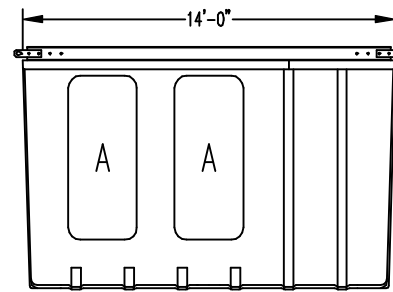


VP Model BA-814

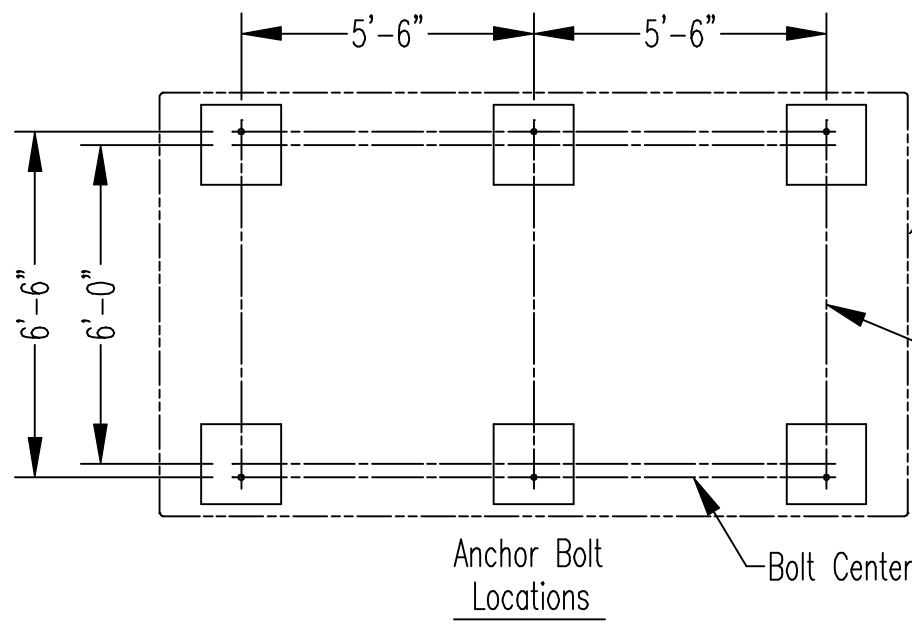
Door Option Schedule			
Width	A	B	C
2'-5"	•	•	•
2'-8"	•	•	
3'-0"	•		



Exterior View



Dense Blocking

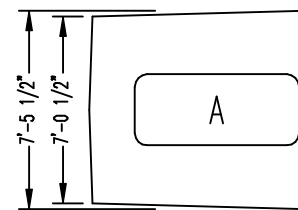


Shelter Outline

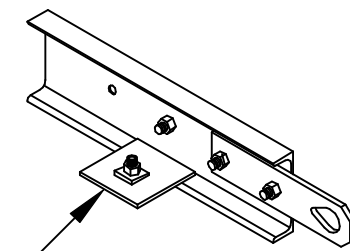
Pier Center

Anchor Bolt Locations

Bolt Center

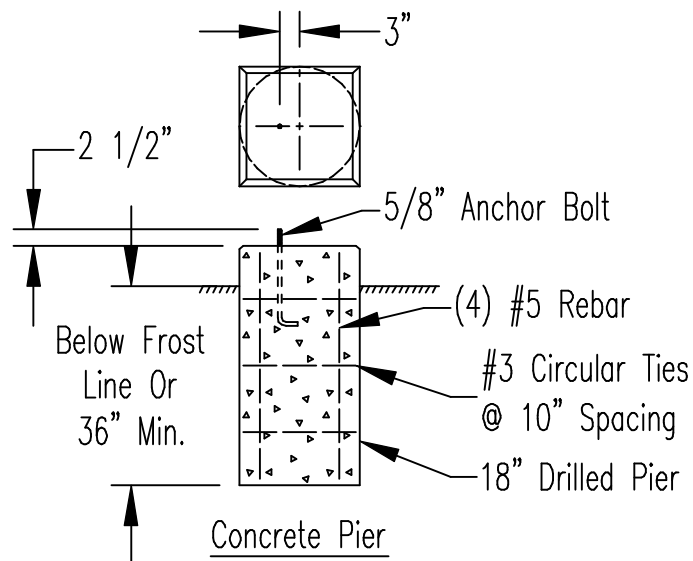


Interior View



Tie Down Plate
Furnished with Shelter

Anchor Detail



Concrete Pier

Walls and Roof

Fiberglass exterior shell • fiberglass interior shell • foamed-in-place urethane core • gel coat molded-in color finish both interior and exterior • wall thickness 2" with 3" at ribs • roof thickness 3" with 4" at ribs.

Standard Floor

Sandwich panel floor • 3" overall thickness • finish floor • fiberglass coated 3/4" wood upper face • 1-1/2" rigid plastic foam insulating core and wood blocking • fiberglass coated 3/4" wood lower face • 6" steel channel beam/skid assembly with bolt-on lifting plates for handling.

Standard Door

Door construction same as dome • 2-1/4" overall thickness • 3 hinges • door pulls inside and outside • padlocking wedge levers with inside release handles • continuous rubber seal.

Standard Attachment Blocking

Dense blocking fiberglassed to backside of inside fiberglass shell at molded-in recesses continuous up walls and across ceiling for the attachment of heavy accessory items.

Dimensions and Weight

Exterior width:	8'-0"
Exterior length:	14'-0"
Exterior height:	9'-2"
Floor to ceiling:	8'-0"
Std. door opening:	2'-8" x 6'-2"
Approx. weight:	2900 lbs.

Standard Design Loadings

Floor:	200 psf
Walls:	150 mph wind
Roof:	54 psf

Heat Transmission

U-Factor	0.07 BTU/hr. sf. F
----------	--------------------